

हाम्रो शहर पाटन !

CBDRR Pres.

सि.एफ.सी. द्वारा
हाम्रो स्थगलत शक्तिको बृद्धि गरौं!

Necessity of CFC

Summary

1. What is CFC?
2. Disaster occurred by earthquake at Patan
3. Weak points of firefighting at Patan
4. Necessity of CFC

CFC : Civil Firefighting Corps

What is **Civil Firefighting Corps (CFC)**

- It is volunteer firefighting corps.
- The member of corps usually has a own job.
- In case of Japan
 - The member is a part time fire fighter as volunteer
- Japan is one of the best country which has enhanced volunteer's fire fighting system
- In Japan there are 2,263 civil firefighting corps

Country name	Number of fire volunteer
Germany	1,000,000
USA	800,000
China	3,000,000
France	200,000
South Korea	80,000
Japan	879,978

तपाईं सोध्नु हुन्छ

"के ठूलो भूकम्प आउँछ ?"

You ask "does the so big
earthquake come?"

हो हामी जापनिजहरुले पनि तपाईं जस्तै सोचेका थियौं !
तर हामीले कल्पना समेत नगरेको भयानक भूकम्पले आक्रमण गर्यो !

Yes! we Japanese also thought like you !
But, it attacked us on more than our imagination!

Kathmandu

काठमाडौं उपत्यका का फल्टहरू

Fault of Katmandu valley

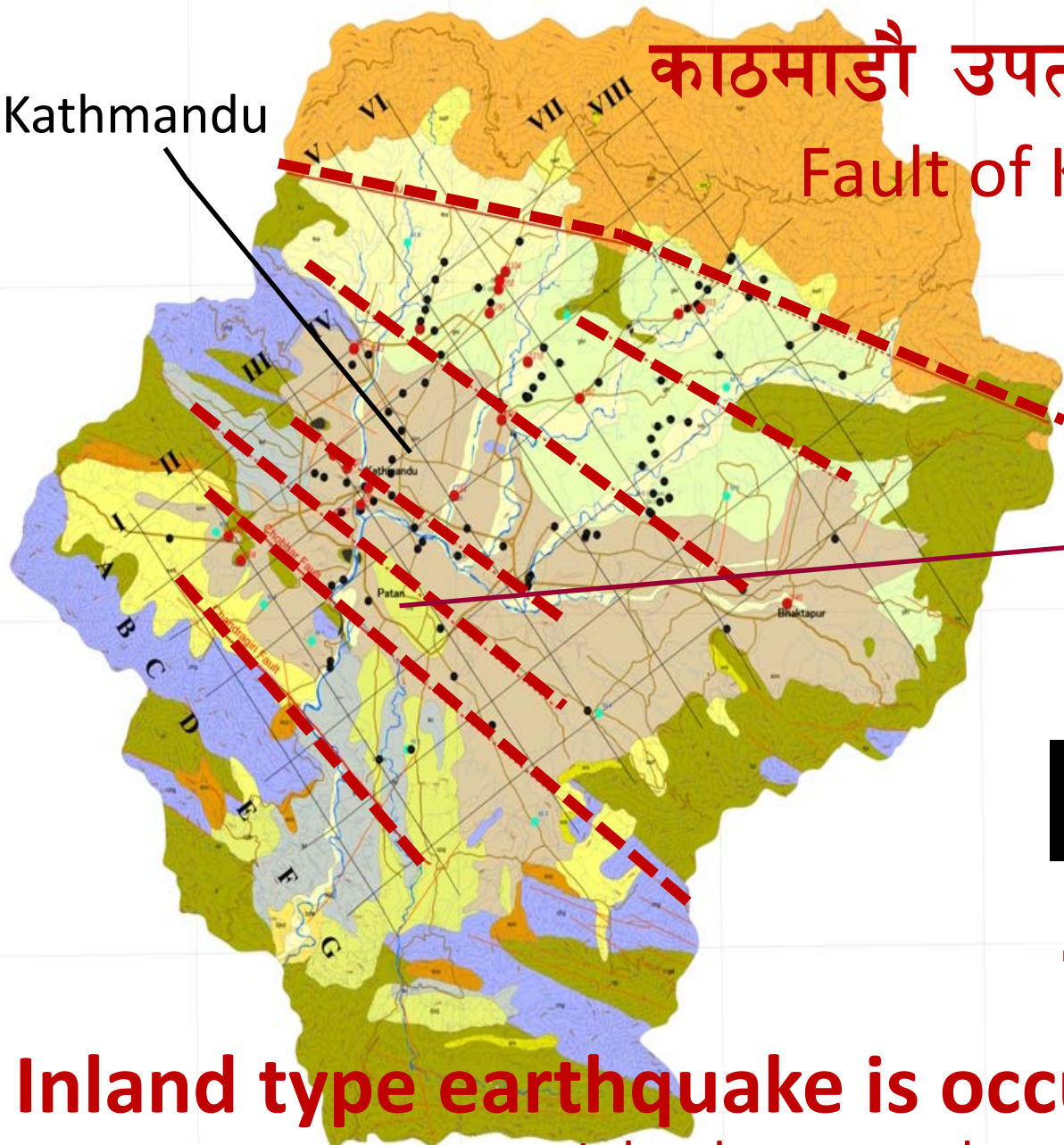
Patan

Inland type

----- Fault line

Inland type earthquake is occurred by Fault

Inland type earthquake causes big disaster



पाटनमा अनुमानित क्षति

Assumed damage at Lalitpur according 2002 JICA STUDY

	Inland type	Kathmandu Valley	Lalitpur city(2013)
Typical earthquake	Hanshin-Awaji Great Earthquake	JICA study 1998 Households based calculation	2011 Census based calculation
Occurrence year	1995	200X	20XX
Richter magnitude	7.3 (1/11)	8.0	8.0
Casualty and Missing	6,434	18,000+?	4,024+?
(Drowned)	0% (-)	(-)	(-)
(Burned)	93.3%	This study did not consider casualty burned to death.	?
(Crushed)	(around 6,000)		
Injured	43,792	147,000+?	33,400+?
Completely destroyed building	104,906	53,000	12,149
Half destroyed Bldg.	144,274	75,000	16,973
(Burn down and half)	7,574	?	?

हान्सिन आवाजिन भयानक भूकम्प पश्चात् छिमेकी द्वारा पूर्णस्थापनाका कार्यहरु

Hanshin-Awaji Great Earthquake
Rescue activity by the vicinity resident

भत्केको घर बाट ३५०० जना को उद्धार

3500 Persons were rescued from collapsed buildings

८०० जना को उद्धार (२० %)

800 Persons (20%) were rescued by Public aid

अरु ८०% को छिमेकी र टोल आगलागी नियन्त्रण समिति द्वारा उद्धार

Other 80% were rescued by Neighbor and CFC

किन कि

Because



Earthquake comes without fail though Nobody knows when

And fire breaks out without fail at Big earthquake

1. Is the wind in which direction more dangerous?
2. Is the concentration level of population safe?
3. How about the situation of the road?
4. Can Fire brigade easily reach to Firefighting place?
5. Is the building combustible?
6. How about the firefighting preparation in the building?
7. How about possibility of the fire spread?
8. How about the equipment of the fire station?
9. How about the water source for firefighting?
10. Were there a lot of fires?



2. Is the concentration level of population safe?

पाटन वार्ड क्षेत्र को जनसंख्या घनत्व

Population

Density of Lalitpur ward area

2011 census result

World heritage area density
(9 wards average)

459persons/ha

Other area density

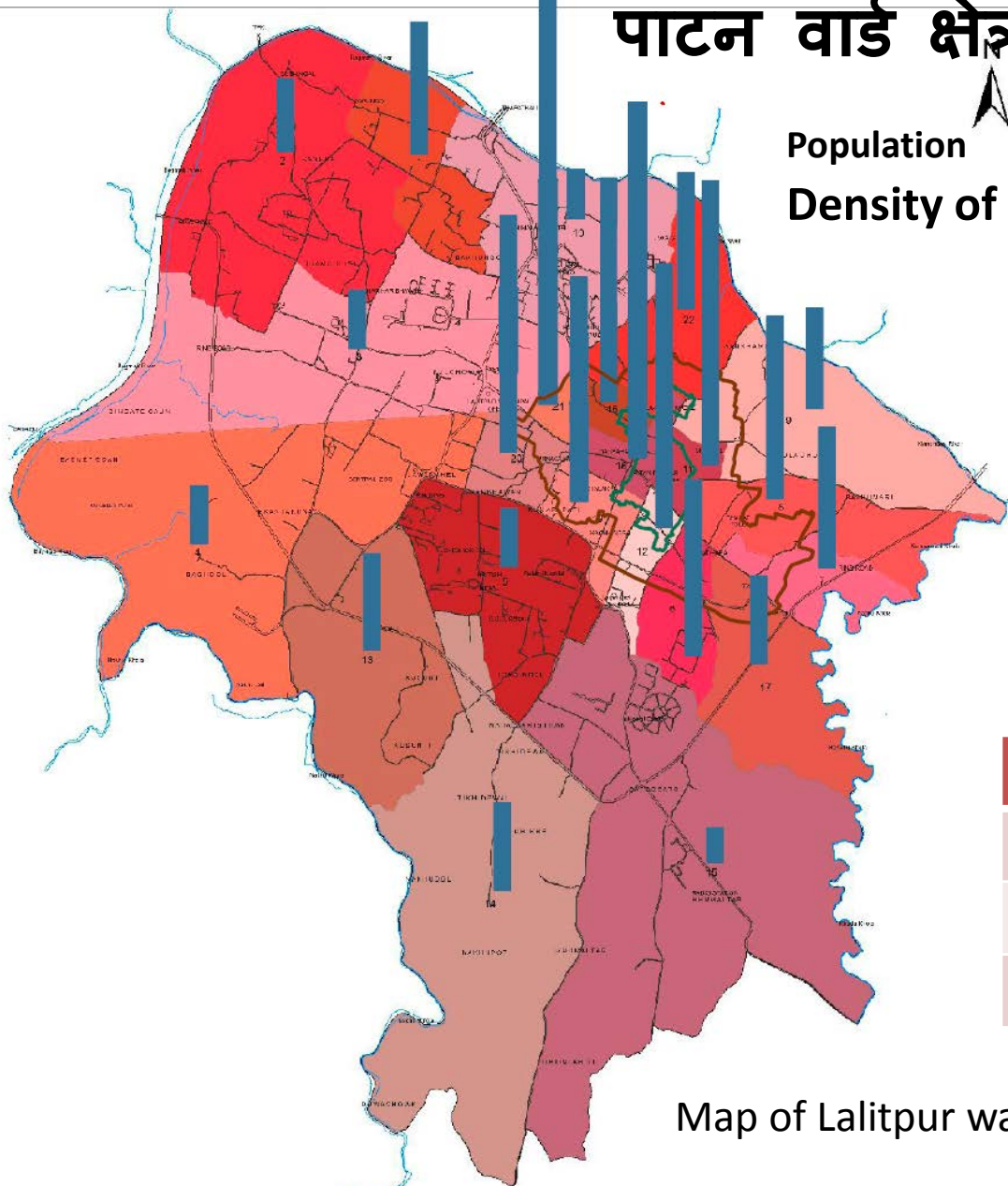
(13 wards average)

146persons/ha

City population Density(p/ha)

Male(Maldives)	350
Paris(France)	206
Tokyo(Japan)	144

Map of Lalitpur ward area



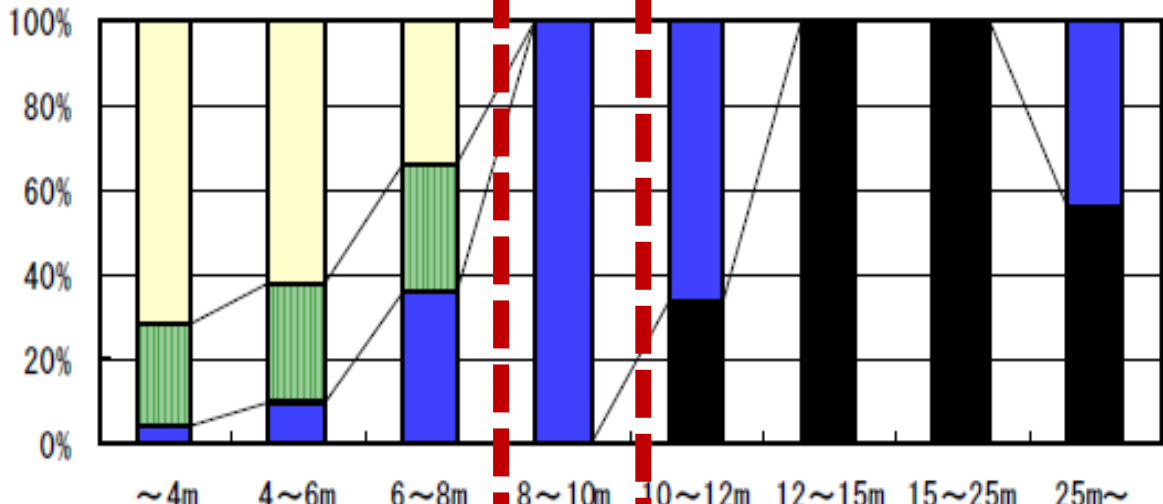
3. How about the situation of the road?

विश्व सम्पदा क्षेत्रको बाटो को स्थिती

Gabahal street
W=7.3m
Min W=5.86m

Kumaripati street
W=more 12.0m

Other roads are less than 7m



- Not possible to pass
- Only people possible to
- Vehicle possible to pass
- Derbies spread to foot pass

6. How about the firefighting preparation in the building?



खुला आगो



Open fire

8. How about the equipment of the fire station?

ललितपुर बारुन यन्त्र का औजारहरु

Donated from Japan
(L5420xW1900xH2600)

Purchased from India
(3,500 liter water tank)
(L6920xW3170xH2670)

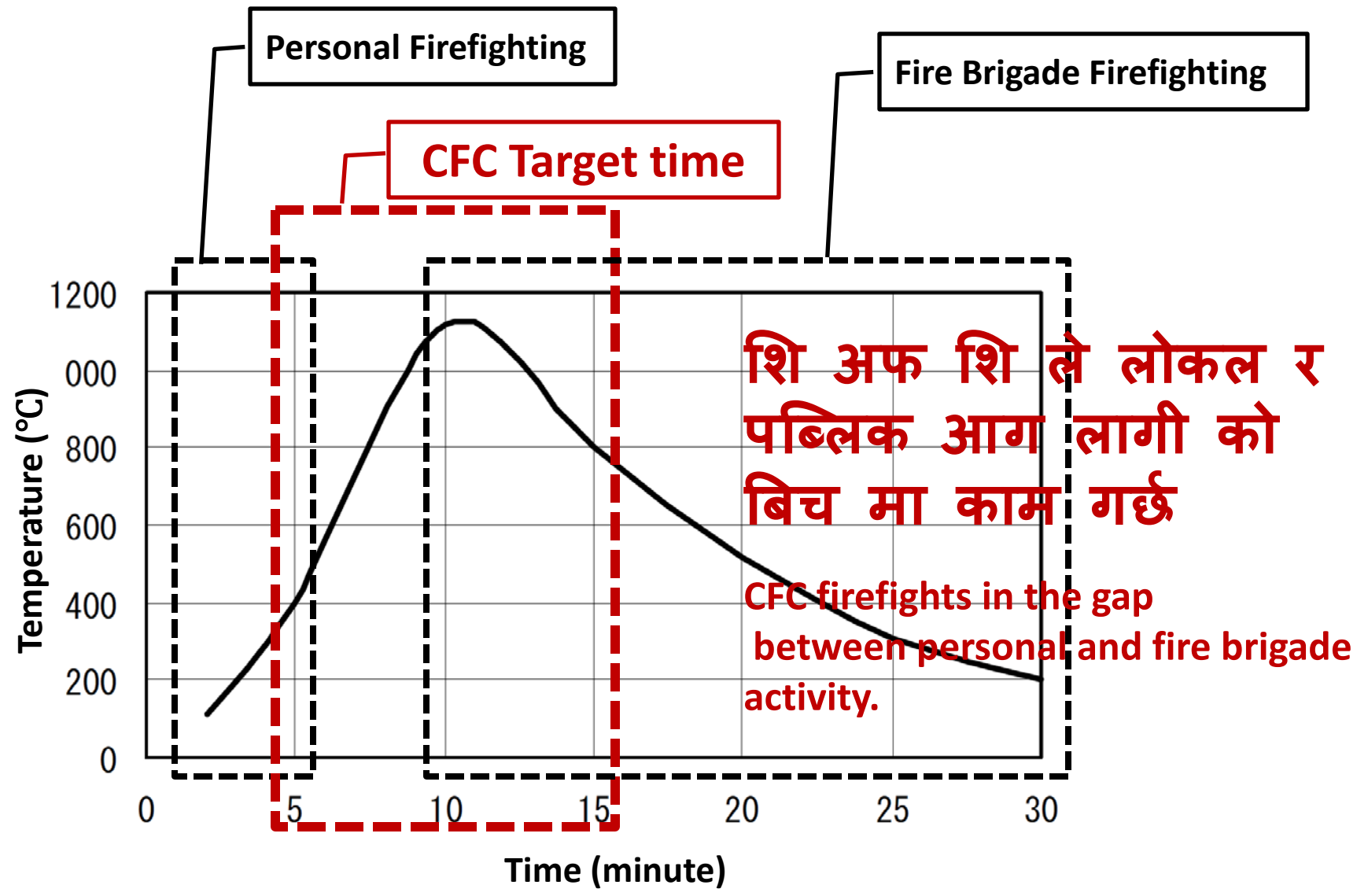
Donated from Japan
(L5200xW1720xH2300)

Donated from Japan
(2,000 liter water tank)
(L7170xW2260xH2940)



आग लागी मा काठ को घर मा तापक्रम को रेकोर्ड

Wooden building standard temperate curve at Fire



From such situation **How to secure yourself, your family and your town?**

● **Help each other**

- We know
- It's easy

Community based CFC

ult to do

□ **How about to make new organization?**

Fire station
(Support, Conduct)

City office

यसको समाधान भनको स्थानिय आगलागी नियन्त्रण समष्टि स्थापना गर्नु हो

Community (Support)

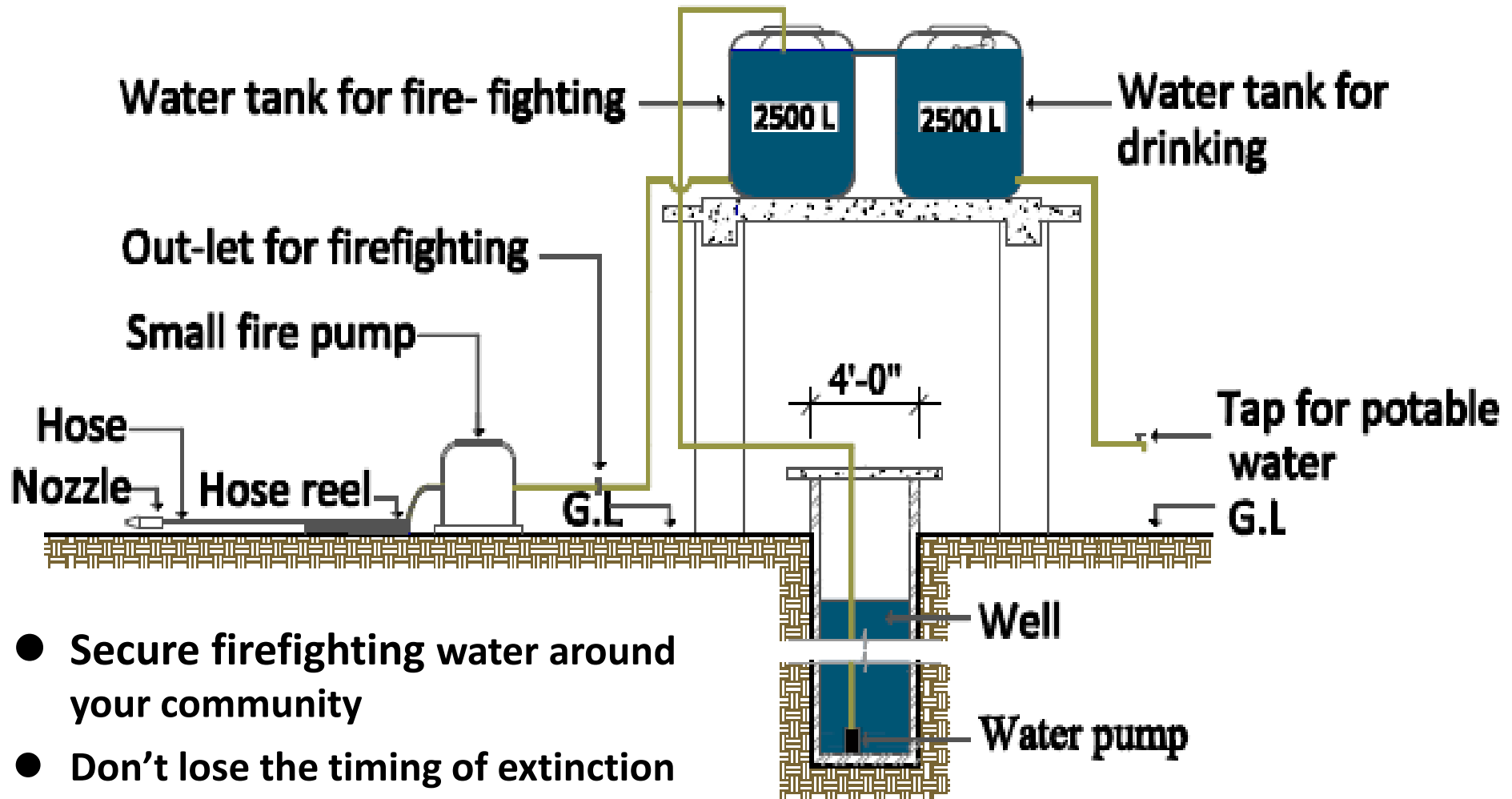
Community (Support)

Community (Support)

Community based fire fighting Corps

CFC needs its base

JICA has a plan to make 2 CFC bases as model plant

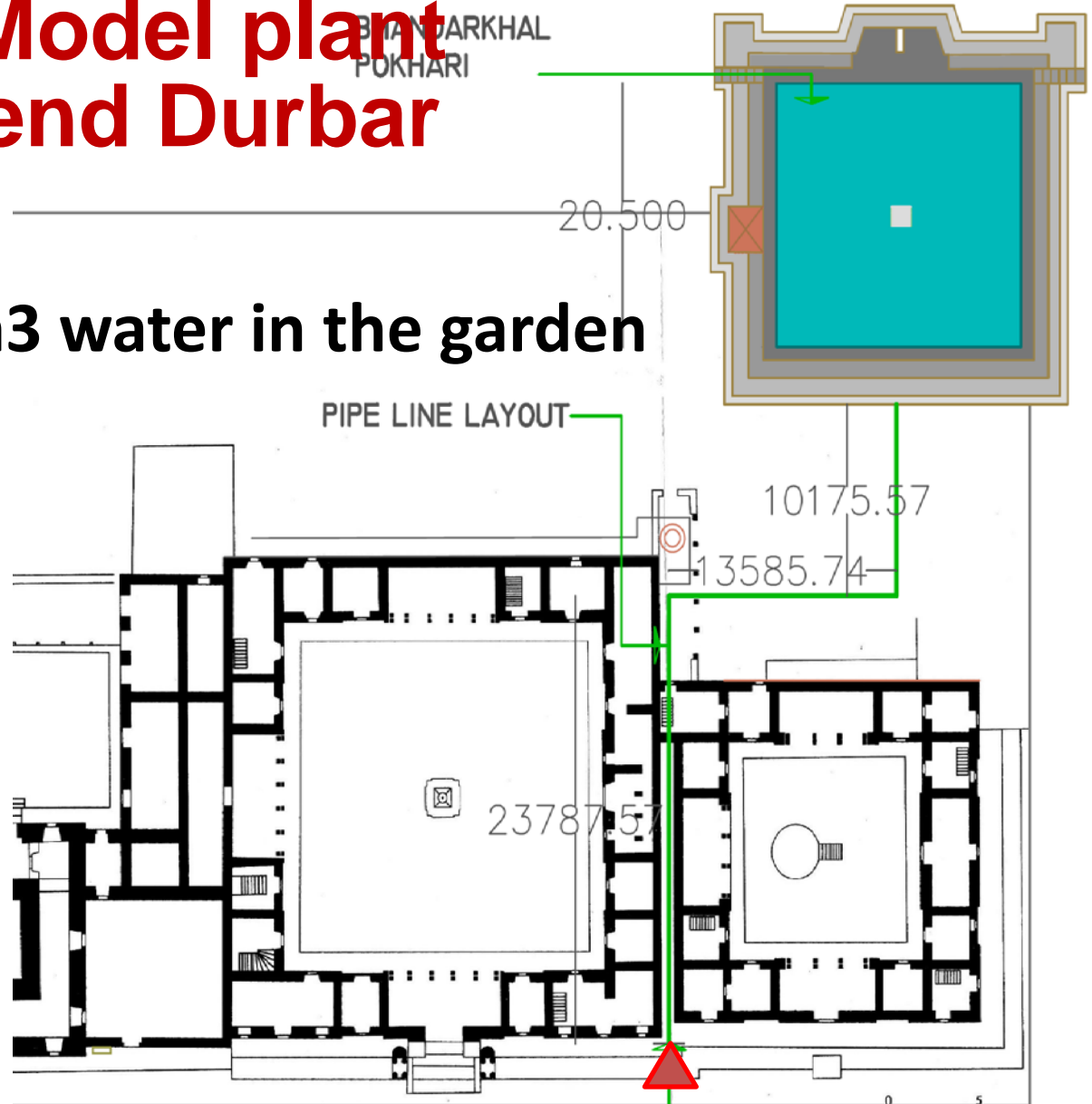


- Secure firefighting water around your community
- Don't lose the timing of extinction

□ Now we are searching the committee for making this model plant

Other CFC Model plant Defend Durbar

Durbar has 330m³ water in the garden

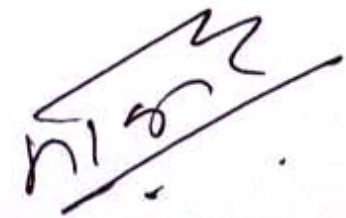


Set up Fire Hydrant

Durbar Square

Lalitpur City will change the policy for firefighting

- Now we are waiting for a fire at the fire station like as a doctor waiting for a sick patient at a hospital
- This situation is said “Supportive care”
- Of course we know the treatment for the burn child is need, but we think it is more important for the child not to burn, it’s “Preventive care”
- We change the policy of firefighting from Supportive care to Preventive care
- Please support our activity on your hands



Mr. Monan Nath Maskey
Chief and Executive Officer

सुनामिको ४५ घण्टा पछि को अवस्था

45 hours later from Tsunami

समाप्त
तपाईंको उपस्थिती को लागि
धन्यवाद

END

Thank you for your attention

हाम्रो शहर लाई अभि मजबुद बनाऔ !!

Let's make our town
more tough !!